

SCU-LAN10

Firmware Upgrade Manual

Important

- This firmware is provided for the Network Remote Control System SCU-LAN10.
- Before downloading the software, please read the "Important Notes" carefully.
- Downloading this firmware will indicate your agreement with the contents of the "Important Notes".

Important Notes

- All responsibility in using this firmware lies with the customer. We cannot be held responsible in any way for any damages or losses which may be incurred by the customer as a result of using this firmware.
- Copyrights and all other intellectual property rights for the firmware, as well as the manual, are the property of YAESU MUSEN CO., LTD.
- The revision and modification of this firmware is prohibited. Redistribution, transfer, and resale of downloaded files are also prohibited.
- Downloaded files may only be used for personal use.
- If you cannot perform the firmware upgrade yourself, please consult with one of our sales sites or service centers.

Regarding this Firmware

How to Confirm the Firmware Version

In order to check the current firmware version, the SCU-LAN10, computer, and transceiver must be connected and initial settings must be completed. If the initial settings have not been completed, complete the initial settings using the method described in the "SCU-LAN10 Installation Manual".

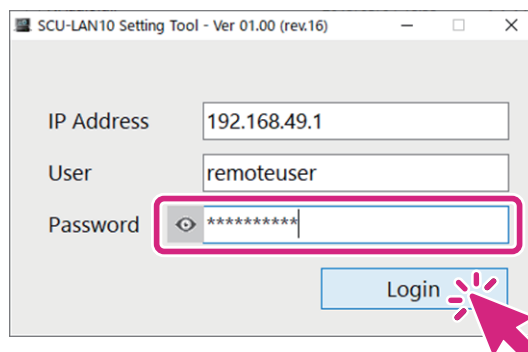
● Check on the SCU-LAN10 remote control software screen

1. Click [Help] at the top left of the screen → Click [About] → The current version will be displayed at the bottom right of the pop-up screen.
2. When finished confirming, click [OK].

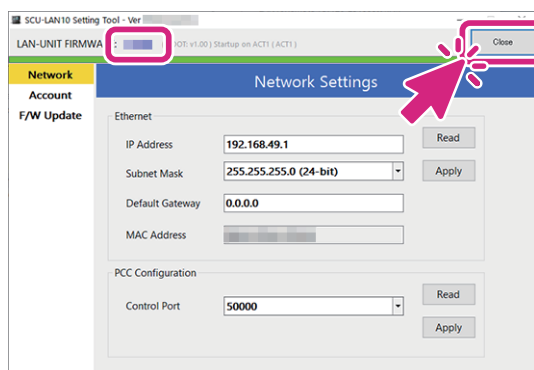


● Check on the screen of the setting software “SCU-LAN10 Setting Tool”

1. Click the Windows start button and click the [SCU-LAN10 Setting Tool] icon in the “Yaesu Musen” group to start the setting software.
2. The login screen will be displayed. Enter your password and click [Login].



3. The current version will be displayed at the top left of the screen.
4. When finished confirming, click [Close].



Preparing for firmware update

Already connected the SCU-LAN10, computer, and wireless device and completed the initial settings, please proceed to "Downloading the firmware" below.

Connect the SCU-LAN10, computer, and transceiver and perform the initial settings.

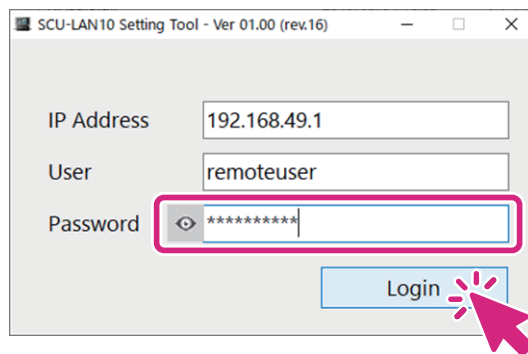
If the initial settings have not been completed, complete the initial settings using the method described in the "SCU-LAN10 Installation Manual".

Downloading the Firmware

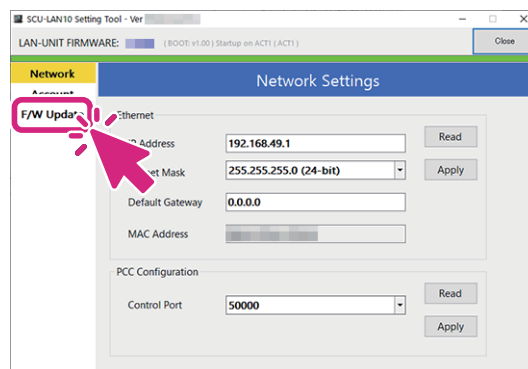
1. Download the "SCU-LAN10_Firmware_update_xxxxx.zip" compressed file from YAESU website.
2. Unzip the downloaded file.
The firmware file (SCU-LAN10_LAN_Vxxxx.SFL) is in the "SCU-LAN10_Firmware_update_xxxxx" folder that is generated at the time of extraction.

How to Update the Firmware

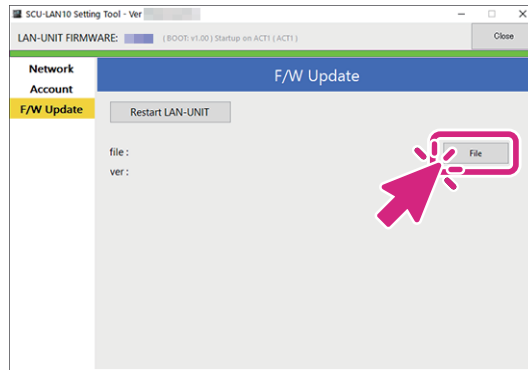
1. Click the Windows start button and click the [SCU-LAN10 Setting Tool] icon in the "Yaesu Musen" group to start the setting software.
2. The login screen will be displayed. Enter your password and click [Login].



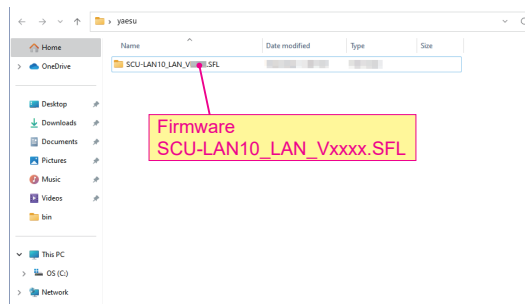
3. The configuration software screen will be displayed, so click [F/W Update].



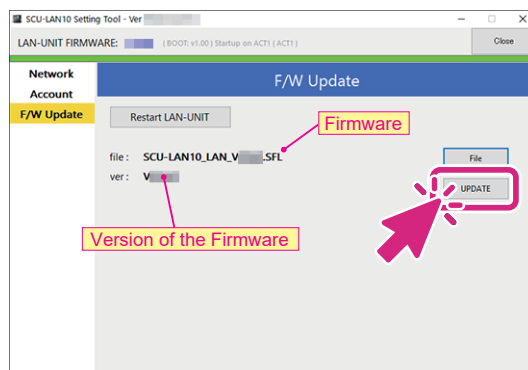
4. Click [File].



5. Select the firmware file (SCU-LAN10_LAN_Vxxxx.SFL) that you downloaded and unzipped in advance and click [Open].

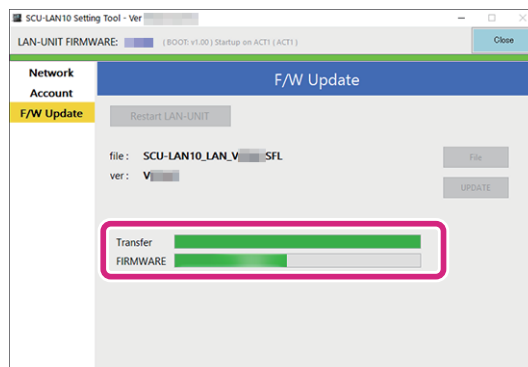


6. Click [UPDATE] to update the firmware.

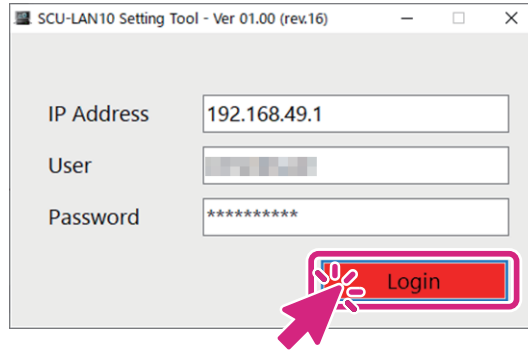


7. The update progress indicator is displayed when the firmware transfer begins. During the update, the POWER LED on the SCU-LAN10 unit will blink in green, and the STATUS LED will blink in red.

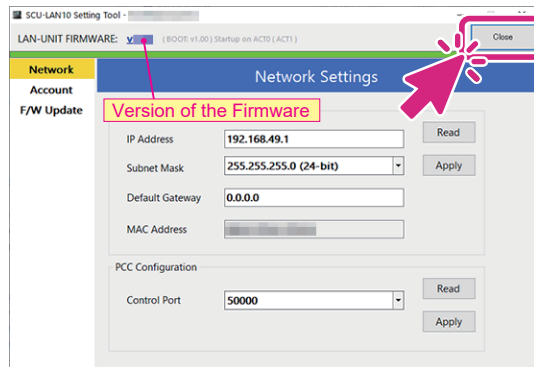
Please wait until the process has been completed.



8. When the update is complete, a login screen will be displayed, so click [Login].



9. The configuration software screen will be displayed, so check the firmware version.



10. When finished confirming, click [Close].

This completes the firmware upgrading process.



Copyright 2023
YAESU MUSEN CO., LTD.
All rights reserved.

No portion of this manual may be
reproduced without the permission of
YAESU MUSEN CO., LTD.

YAESU MUSEN CO., LTD.

Omori Bellport Building D-3F
6-26-3 Minami-Oi, Shinagawa-ku, Tokyo, 140-0013, Japan

YAESU USA

6125 Phyllis Drive, Cypress, CA 90630, U.S.A.

YAESU UK

Unit 12, Sun Valley Business Park, Winnall Close
Winchester, Hampshire, SO23 0LB, U.K.